

Certificate of Analysis

100bp DNA Ladder:

Part No. Size
G210A 250µl

Description: The 100bp DNA Ladder is ideal for determining the size of double-stranded DNA from 100–1,500 base pairs. The ladder consists of 11 double-stranded DNA fragments with sizes of 100, 200, 300, 400, 500, 600, 700, 800, 900, 1,000 and 1,500bp. The 500bp band is present at triple the intensity of the other fragments and serves as a reference indicator. All other fragments appear with equal intensity on the gel. Recommended loading volume is 5µl/lane.

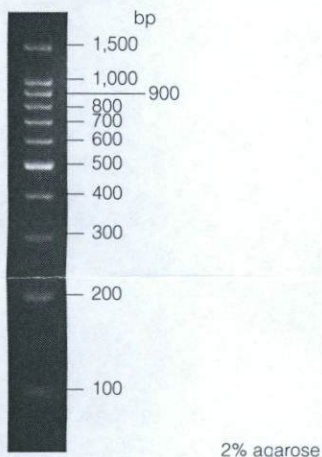
Storage Buffer: The 100bp DNA Ladder is supplied in 10mM Tris-HCl, 1mM EDTA. Final pH 7.4.

Concentration: Five microliters (650ng) of the ladder contains approximately 150ng of the 500bp DNA fragment and 50ng of each of the other ten DNA fragments.

Storage Conditions: Store at –20°C.

Usage Note: Concentration gradients may form in frozen products and should be mixed well prior to use.

Blue/Orange 6X Loading Dye (G190A): The Blue/Orange 6X Loading Dye supplied with these markers has a composition of 15% Ficoll® 400, 0.03% bromophenol blue, 0.03% xylene cyanol FF, 0.4% orange G, 10mM Tris-HCl (pH 7.5) and 50mM EDTA. This dye is used for loading DNA samples into gel electrophoresis wells and tracking migration during electrophoresis. Recommended usage is one part loading dye for every five parts DNA solution. The xylene cyanol FF migrates at approximately 4kb, bromophenol blue at approximately 300bp and orange G at approximately 50bp in 0.5% to 1.4% agarose gels in 0.5X TBE (1).



Quality Control Assays

Accurate Sizing: Five microliters of the 100bp DNA Ladder are mixed with 1µl of Loading Dye and subjected to electrophoresis on a 2% agarose gel with TAE 1X buffer. The markers must show the expected pattern when compared with HaeIII-digested ΦX174 DNA Markers (Cat.# G1761).

Nuclease Assay: To test for nuclease contamination, 5µl of the 100bp DNA Ladder are incubated in restriction enzyme buffer overnight at 37°C. Following incubation, the ladder is subjected to electrophoresis and visualized on an ethidium bromide-stained agarose gel to verify the absence of visible degradation.

5 End-Labeling: Five microliters of the 100bp DNA Ladder are added to a labeling reaction containing 1µl of T4 Polynucleotide Kinase 10X Buffer, 1µl of [γ -³²P]ATP (3,000Ci/mmol @ 10µCi/µl), 1µl of T4 Polynucleotide Kinase and 2µl of deionized water. This reaction is incubated at 37°C for 10 minutes, then stopped by the addition of 1µl of 0.5M EDTA. After labeling, the 100bp DNA Ladder is separated on a 4% nondenaturing polyacrylamide gel. After the gel is processed, the labeled markers must be easily visible after overnight exposure to X-ray film without an intensifying screen at –70°C.

Reference

1. Sambrook, J., Fritsch, E.F. and Maniatis, T. (1989) *Molecular Cloning: A Laboratory Manual*, Cold Spring Harbor Laboratory, Cold Spring Harbor, NY.

Signed by:

R. Wheeler, Quality Assurance

100bp DNA Ladder

REF G2101

LOT 0000295200

–30°C \rightarrow –10°C

2023-03-21

Dispensed Lot#: 0000287304

250µl

For Laboratory Use

Country of Origin: CHN
CHN: G210A
USA: All others

Promega Corporation
2800 Woods Hollow Road
Madison, WI 53711-5399 USA



ADG2101 00002952002

PEEL
HERE



Promega Corporation

2800 Woods Hollow Road
Madison, WI 53711-5399 USA
Telephone 608-274-4330
Toll Free 800-356-9526
Fax 608-277-2516
Internet www.promega.com

PRODUCT USE LIMITATIONS, WARRANTY, DISCLAIMER

Promega manufactures products for a number of intended uses. Please refer to the product label for the intended use statements for specific products. Promega products contain chemicals which may be harmful if misused. Due care should be exercised with all Promega products to prevent direct human contact.

Each Promega product is shipped with documentation stating specifications and other technical information. Promega products are warranted to meet or exceed the stated specifications. Promega's sole obligation and the customer's sole remedy is limited to replacement of products free of charge in the event products fail to perform as warranted. Promega makes no other warranty of any kind whatsoever, and SPECIFICALLY DISCLAIMS AND EXCLUDES ALL OTHER WARRANTIES OF ANY KIND OR NATURE WHATSOEVER, DIRECTLY OR INDIRECTLY, EXPRESS OR IMPLIED, INCLUDING, WITHOUT LIMITATION, AS TO THE SUITABILITY, PRODUCTIVITY, DURABILITY, FITNESS FOR A PARTICULAR PURPOSE OR USE, MERCHANTABILITY, CONDITION, OR ANY OTHER MATTER WITH RESPECT TO PROMEGA PRODUCTS. In no event shall Promega be liable for claims for any other damages, whether direct, incidental, foreseeable, consequential, or special (including but not limited to loss of use, revenue or profit), whether based upon warranty, contract, tort (including negligence) or strict liability arising in connection with the sale or the failure of Promega products to perform in accordance with the stated specifications.

© 1997, 1998, 2001, 2004, 2005, 2009, 2016
Promega Corporation. All Rights Reserved.

Ficoll is a registered trademark of GE Healthcare Bio-sciences.

Products may be covered by pending or issued patents or may have certain limitations. Please visit our Web site for more information.

All specifications are subject to change without prior notice.

Product claims are subject to change. Please contact Promega Technical Services or access the Promega online catalog for the most up-to-date information on Promega products.

Part# 9PIG210
Printed in USA. Revised 10/16.